

THIS COPY IS PROVIDED ON A RESTRICTED BASIS AND IS NOT TO BE USED IN ANY WAY DETRIMENTAL TO THE INTERESTS OF PANDUIT CORP.

Example : CLT 100 N-C 630

CLT

100

N

C

630

Part Description  
CORRUGATED LOOM  
TUBING  
CLT = SLIT WALL  
CLTS = SOLID WALL

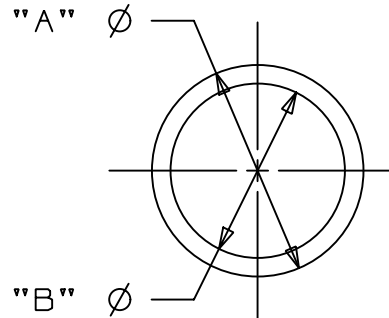
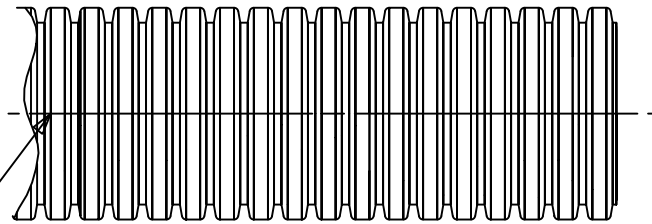
Bundle Diameter	
25 = 1/4"	( 6.35mm)
35 = 5/16"	( 7.94mm)
38 = 3/8"	( 9.52mm)
50 = 1/2"	(12.70mm)
62 = 5/8"	(15.87mm)
75 = 3/4"	(19.05mm)
100 = 1"	(25.40mm)
125 = 1 1/4"	(31.8mm)
150 = 1 1/2"	(38.1mm)
188 = 1 7/8"	(47.63mm)

F = POLYETHYLENE  
N = HEAT STABILIZED  
NYLON

X = 10 feet  
L = 50 feet  
C = 100 feet  
T = 200 feet  
D = 500 feet

Color Suffix  
630 = Heat Stabilized  
Black Nylon  
20 = Black Polyethylene  
3 = Orange  
4 = Yellow

SEE NOTE 3



TUBING IS TO BE SLIT  
IN ONE PLACE DOWN ITS  
ENTIRE LENGTH  
(CLT PRODUCTS)

Notes:

1. Refer to Panduit Catalogs for any additional information.
2. Contact factory for additional sizes, materials, colors and bulk packaging options  
Product Management @ 1-800-777-3300 ext. 7432.
3. Refer to Page 2 of this file or Panduit Catalogs for dimensional data.

CAD FILENAME/LAYERS		G00239HB_DC_CORRTUBE_00	
<b>PANDUIT</b> CORP. TINLEY PARK, ILLINOIS			
<b>CORRUGATED LOOM TUBING</b>			
UNLESS OTHERWISE SPECIFIED, DIMENSIONAL TOLERANCES ARE: (.X) ±0.05 (1.3) (.XXX) ±0.010 (0.25) (.XX) ±0.02 (0.5) ANGLES ± 5°		UNLESS OTHERWISE SPECIFIED, ALL DIMENSIONS ARE GIVEN IN INCHES, THIRD ANGLE PROJECTION.	
DRAWN BY JAD	MAT'L:	SCALE NONE	
DATE 12/7/00	SEE TABLE	DRAWING NO. GB0239HB	DWG SIZE A
CHK'D			

R	12/7/00	JAD		INITIAL RELEASE	GB0239HB	R			
REV	DATE	BY	CHK	DESCRIPTION	ECN	- R	CUST	SUP	

**Ordering Information — Corrugated Loom Tubing**

**'B'**

**'A'**

PANDUIT® Part Number		Material	Color	Inside Diameter	Outside Diameter	Feet Per Pkg.	Pkg. Qty*
Slit	Solid						
CLT25F-C20	CLTS25F-C	Polyethylene	Black	.265" (6.7)	.390" (9.9)	100'	1 Roll
CLT35F-C20	CLTS35F-C			.350" (8.9)	.500" (12.7)	100'	
CLT38F-C20	CLTS38F-C			.414" (10.5)	.556" (14.1)	100'	
CLT50F-C20	CLTS50F-C			.505" (12.8)	.670" (17.0)	100'	
CLT62F-C20	CLTS62F-C			.665" (16.9)	.830" (21.1)	100'	
CLT75F-C20	CLTS75F-C			.760" (19.3)	.935" (23.7)	100'	
CLT100F-C20	CLTS100F-C			.915" (23.2)	1.090" (27.7)	100'	
CLT125F-L20	CLTS125F-L			1.290" (32.8)	1.500" (38.1)	50'	
CLT150F-X20	**			1.550" (39.1)	1.860" (47.2)	10'	
CLT150F-T20	**			1.550" (39.1)	1.860" (47.2)	200'	
CLT150F-D20	CLTS150F-D			1.550" (39.1)	1.860" (47.2)	500'	
CLT188F-X20	**			1.881" (47.8)	2.169" (55.1)	10'	
CLT188F-C20	**			1.881" (47.8)	2.169" (55.1)	100'	
CLT188F-6C20	**			1.881" (47.8)	2.169" (55.1)	600'	
CLT25F-C3	CLTS25F-C3	Polyethylene	Orange	.265" (6.7)	.390" (9.9)	100'	1 Roll
CLT35F-C3	CLTS35F-C3			.350" (8.9)	.500" (12.7)	100'	
CLT38F-C3	CLTS38F-C3			.414" (10.5)	.556" (14.1)	100'	
CLT50F-C3	CLTS50F-C3			.505" (12.8)	.670" (17.0)	100'	
CLT62F-C3	CLTS62F-C3			.665" (16.9)	.830" (21.1)	100'	
CLT75F-C3	CLTS75F-C3			.760" (19.3)	.935" (23.7)	100'	
CLT100F-C3	CLTS100F-C3			.915" (23.2)	1.090" (27.7)	100'	
CLT125F-L3	CLTS125F-L3			1.290" (32.8)	1.500" (38.1)	50'	
CLT150F-X3	**			1.550" (39.1)	1.860" (47.2)	10'	
CLT150F-T3	**			1.550" (39.1)	1.860" (47.2)	200'	
CLT150F-D3	CLTS150F-D3			1.550" (39.1)	1.860" (47.2)	500'	
CLT188F-X3	**			1.881" (47.8)	2.169" (55.1)	10'	
CLT188F-C3	**			1.881" (47.8)	2.169" (55.1)	100'	
CLT188F-CC3	**			1.881" (47.8)	2.169" (55.1)	600'	
CLT125F-L4	**	Polyethylene	Yellow	1.290" (32.8)	1.500" (38.1)	50'	1 Roll
CLT150F-X4	**			1.550" (39.1)	1.860" (47.2)	10'	
CLT150F-T4	**			1.550" (39.1)	1.860" (47.2)	200'	
CLT150F-D4	**			1.550" (39.1)	1.860" (47.2)	500'	
CLT188F-X4	**			1.881" (47.8)	2.169" (55.1)	10'	
CLT188F-C4	**			1.881" (47.8)	2.169" (55.1)	100'	
CLT188F-6C4	**			1.881" (47.8)	2.169" (55.1)	600'	
CLT25N-C630	CLTS25N-C	Heat Stabilized Black Nylon	Black	.265" (6.7)	.390" (9.9)	100'	1 Roll
CLT35N-C630	CLTS35N-C			.350" (8.9)	.500" (12.7)	100'	
CLT38N-C630	CLTS38N-C			.414" (10.5)	.556" (14.1)	100'	
CLT50N-C630	CLTS50N-C			.505" (12.8)	.670" (17.0)	100'	
CLT62N-C630	CLTS62N-C			.665" (16.9)	.830" (21.1)	100'	
CLT75N-C630	CLTS75N-C			.760" (19.3)	.935" (23.7)	100'	
CLT100N-C630	CLTS100N-C			.915" (23.2)	1.090" (27.7)	100'	
CLT125N-L630	CLTS125N-L			1.290" (32.8)	1.500" (38.1)	50'	
CLT150N-D630	CLTS150N-D			1.550" (39.1)	1.860" (47.2)	500'	
CLT188N-6C630	**			1.881" (47.8)	2.169" (55.1)	600'	

\*Order the number of rolls required.

\*\*Contact factory for additional sizes, materials, colors, and bulk packaging.

NOTE: Custom cut-to-length sizes are available upon request. Contact factory for details